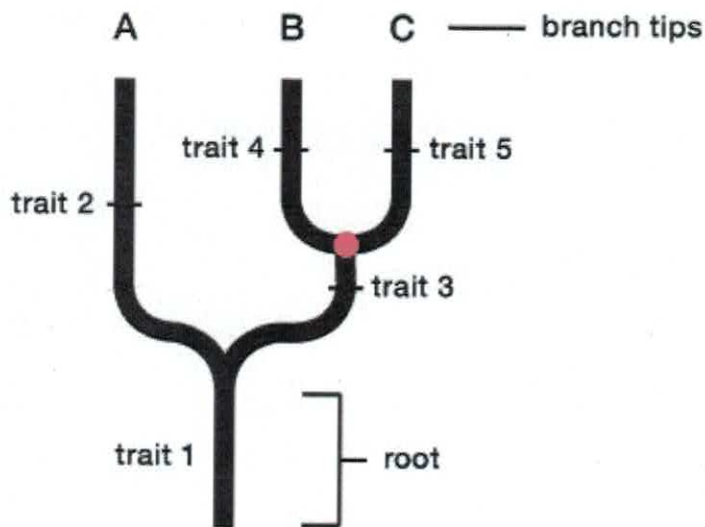


Q1. Vitamin producing E.coli cells in your gut are ____

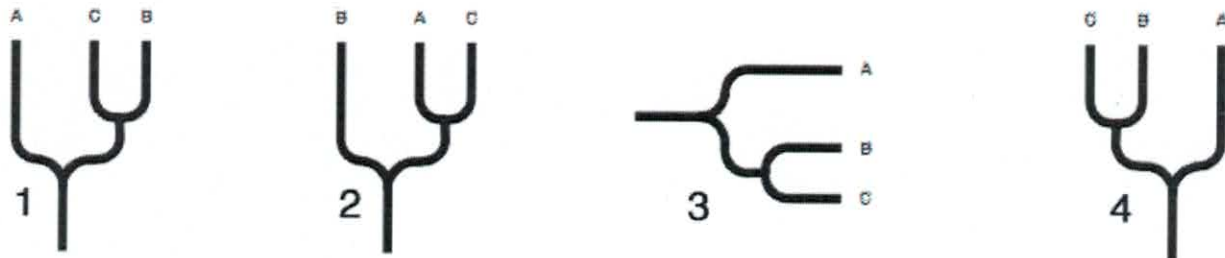
- a. Autotrophs
- b. Heterotrophs
- c. Chemoorganotrophs
- d. Chemolithotrophs
- e. Both B and C

Q2. Which lived more recently in time, the common ancestor species of A and B or the common ancestor species of B and C?



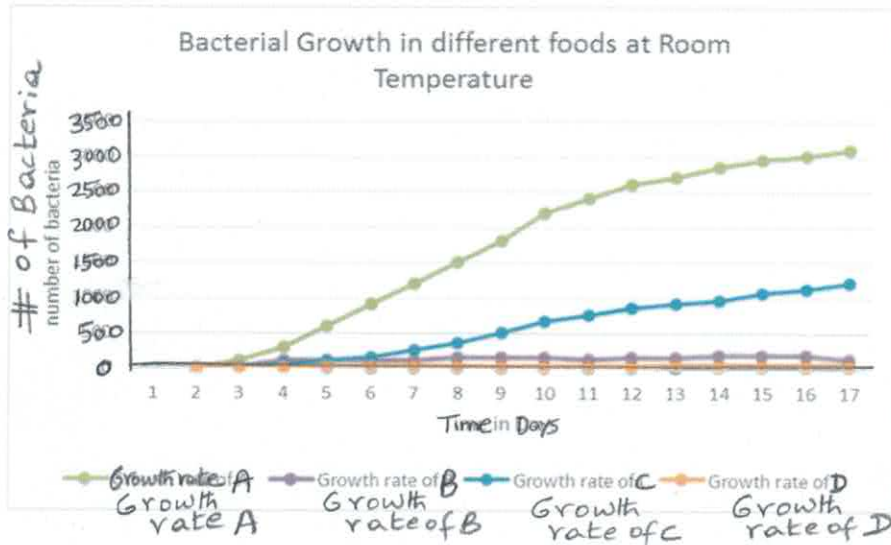
- A. Common ancestor of A and B
- B. Common ancestor of B and C

Q3. There is more than one correct way to show relationships using a phylogenetic tree. Three of the four trees displayed below show the exact same relationship between species A, B, and C. Which tree shows a different relationship?



- A. Figure 1
- B. Figure 2
- C. Figure 3
- D. Figure 4

Q4. Based on the following graph, under which conditions (at room temperature, in the refrigerator, or in the freezer) would you need to store each of the foods (labeled A, B, C and D) if you planned on keeping them fresh for at least 2 weeks?



Food labeled A:

Food labeled B:

Food labeled C

Food labeled D